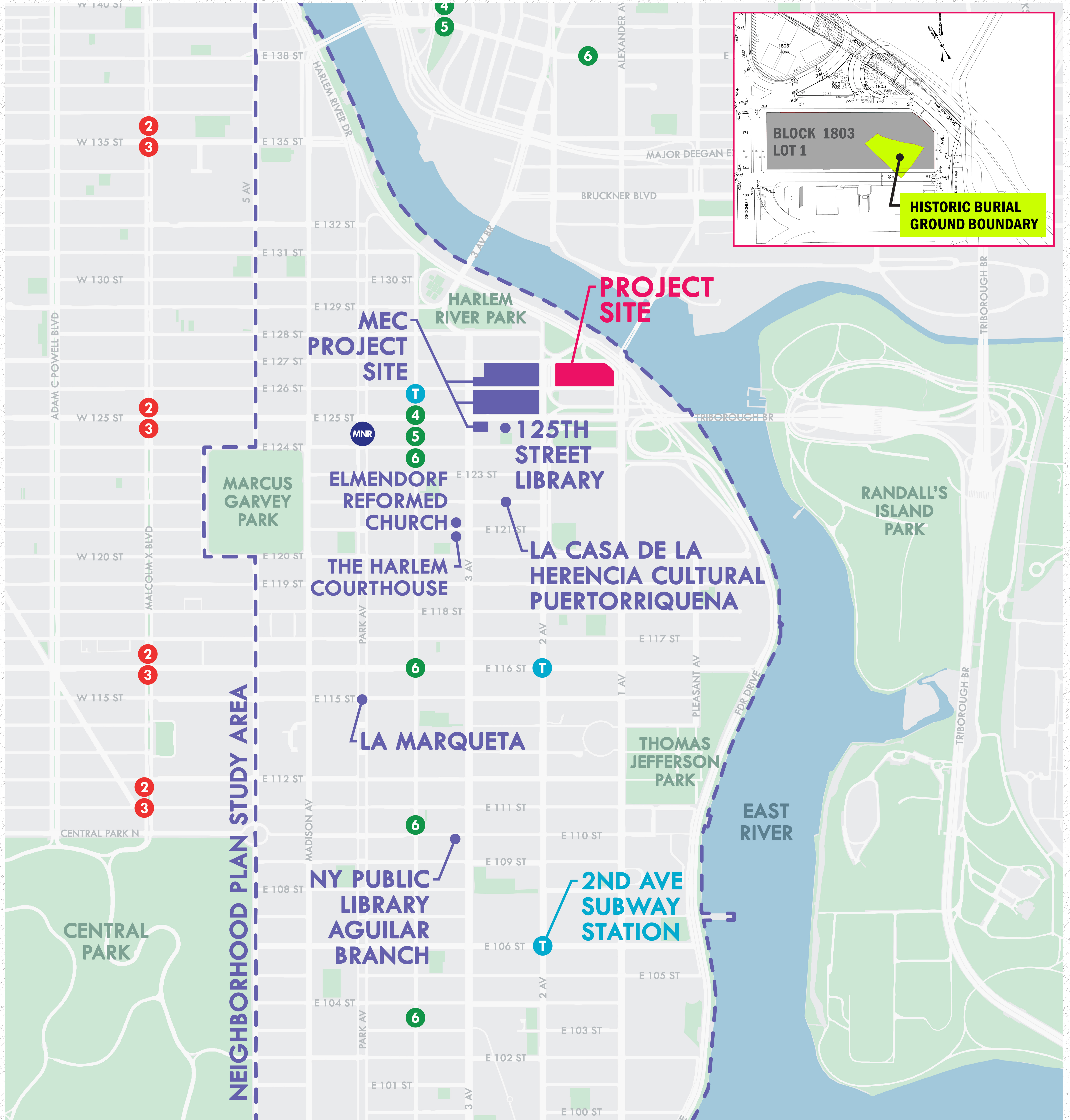




# PRESENT



## CONTEXT MAP





# PRESENT



## SITE CONTEXT



## SITE FACTS

- Block 1803, Lot 1
- 105,710SF (2.42 acres)
- Ownership: City of NY / Leased to MTA
- Status: Currently vacated one-story bus depot and outdoor bus storage
- Location is in East Harlem bounded by E. 127th St. to the north, First Avenue to the east, E. 126th St to the south, and Second Avenue to the west



## PROJECT GOALS

1. Establish a memorial to honor the Burial Ground's history
2. Develop a mix of uses, including affordable & mixed-income housing and job-creating commercial uses
3. Enhance the streetscape and connectivity to the surrounding neighborhood

# PRESENT

## STAKEHOLDERS

### HARLEM AFRICAN BURIAL GROUND TASK FORCE (HABGTF):

In 2009, the Harlem African Burial Ground Task Force was created, co-chaired by Speaker Melissa Mark-Viverito and Reverend Dr. Patricia A. Singletary, Pastor of the Elmendorf Reformed Church. This task force was instrumental in guiding the historical research and discovery of the African Burial Ground site. In 2011, Community Board 11 designated the Harlem African Burial Ground Task Force as the organization representing the interest of the historic colonial cemetery.



Source: [http://cityroom.blogs.nytimes.com/2009/01/19/under-a-bus-depot-traces-perhaps-of-nieuw-haarlem/?\\_r=0](http://cityroom.blogs.nytimes.com/2009/01/19/under-a-bus-depot-traces-perhaps-of-nieuw-haarlem/?_r=0)



Source: <http://www.nycago.org/Organs/NYC/html/ElmendorfRef.html>



Source: Voices of NY

### BUS DEPOT TASK FORCE (BDTF):

In 2015, after the MTA moved most operations off site, the Speaker's Office convened the Bus Depot Task Force, a group of elected officials, City agencies, and community stakeholders including the Harlem African Burial Ground Task Force, to discuss the goals for the site. After a number of meetings, it was determined that the future of the site should:

- Develop a living memorial and cultural center to honor and commemorate the significant social, economic, and cultural history of the Burial Ground and its descendant community
- Create a mixed-use, mixed-income development program
- Enhance site connectivity to the neighborhood
- Realize a financially feasible program to support project uses
- Maximize job creation



Source: Photo by Richard Caplan <http://citylimits.org/2010/03/25/another-african-burial-ground>

# PRESENT

## ARCHEOLOGICAL PROCESS

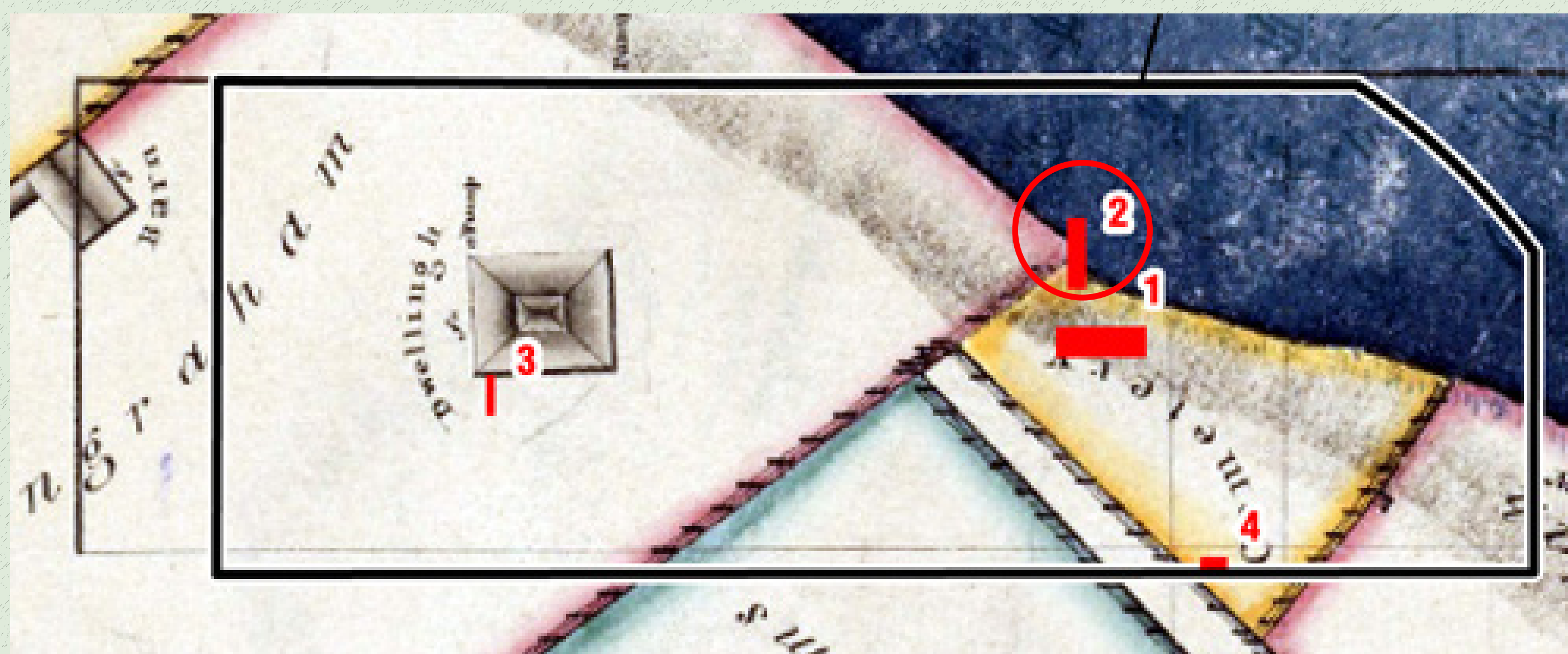
In 2015, EDC commissioned AKRF to perform a Phase 1B Archeological Survey. The purpose of the Phase 1B was to determine the presence or absence of human remains and/or artifacts on the Site. The Phase 1B was carried out under a testing protocol developed after extensive consultation with the Harlem African Burial Ground Task Force, the New York State Office of Parks, Recreation and Historic Preservation, and the New York City Landmarks Preservation Commission. The Phase 1B uncovered the presence of human remains in one of the four testing trenches.

Because there are additional human remains at the site, all future work on the Site would require a Phase 2 Archeological Evaluation. Any future demolition, removal of subsurface infrastructure, or construction would require preparation of an appropriate protocol completed in coordination with the same three parties - the Harlem African Burial Ground Task Force, the New York State Office of Parks, Recreation and Historic Preservation, and the New York City Landmarks Preservation Commission.



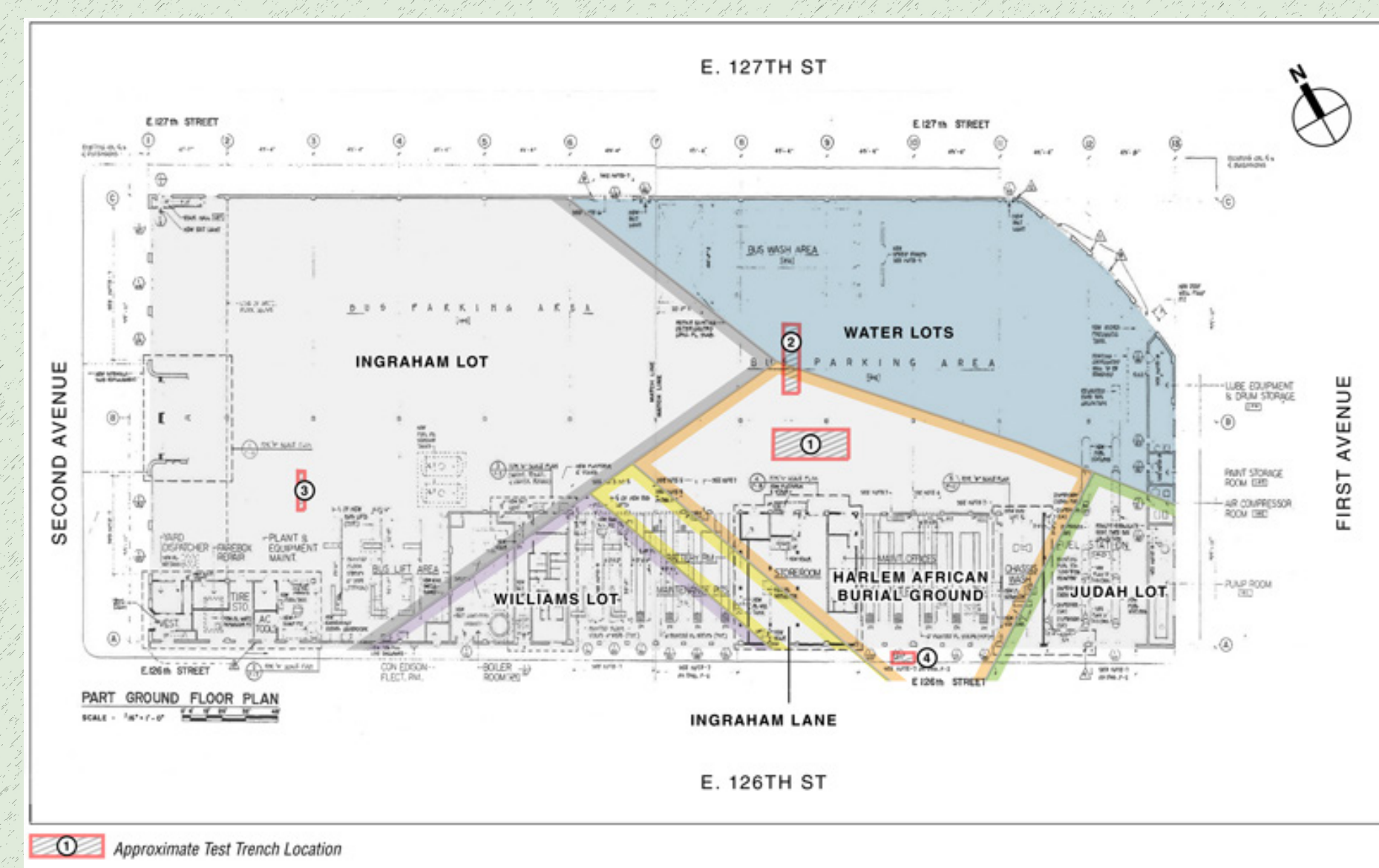
Source: AKRF

### AREAS OF ARCHEOLOGICAL SENSITIVITY

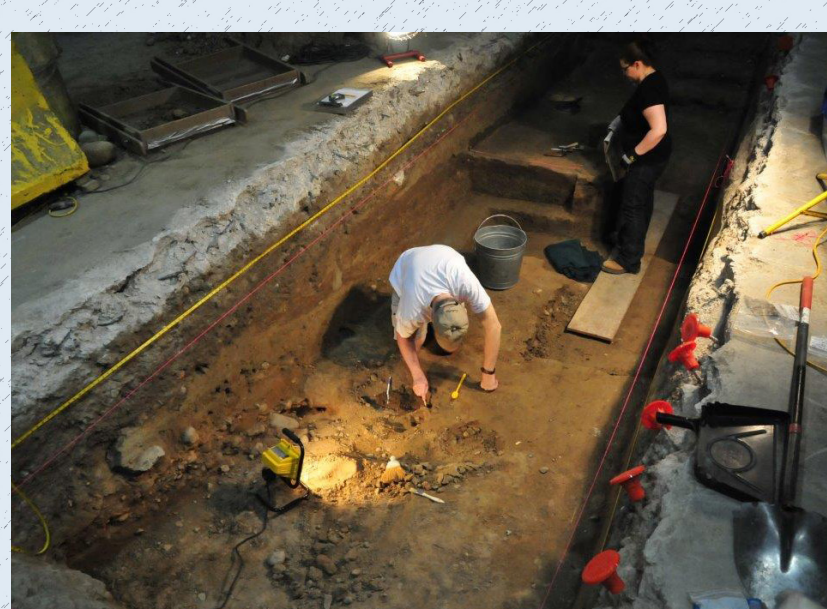
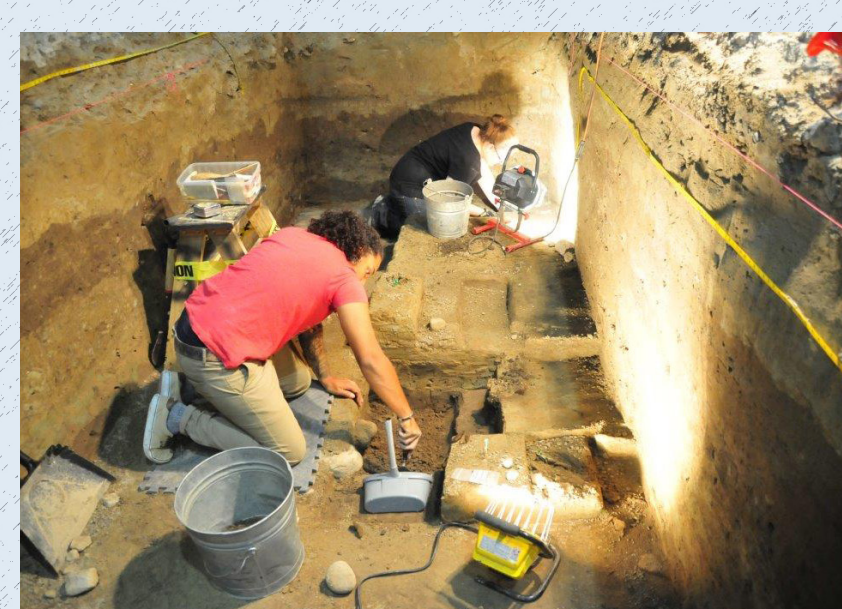
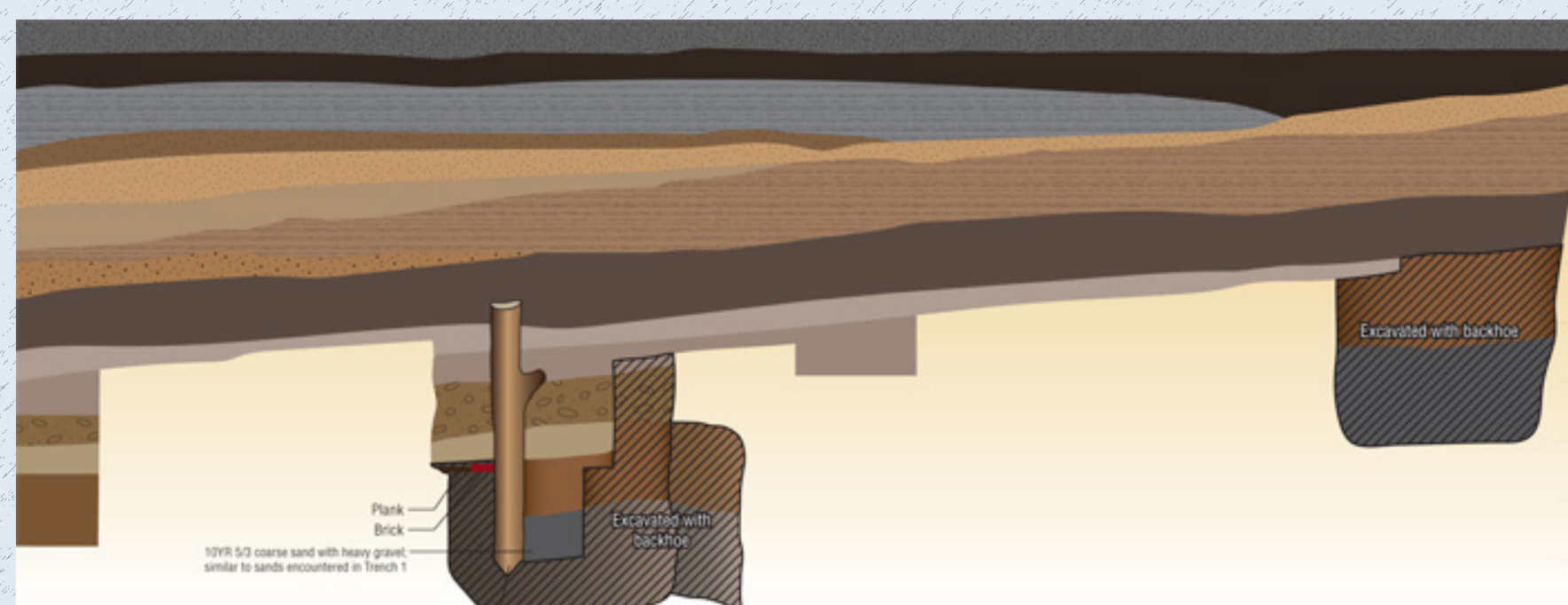


Source: AKRF

### TESTING LOCATIONS



### EXAMINATION, DOCUMENTATION, PACKAGING



Source: AKRF

### CONCLUSIONS

1. No skeletal remains found in former cemetery
2. Skeletal remains found in northern portion of trench 2 (within water lot)
  - Not intact but have been redeposited in fill
  - Fragmentary and in fair to poor condition
  - The remains of at least 2 people
  - Recovered an almost complete skull:
    - Likely an adult female
    - Likely of African descent
3. Cemetery likely lost during post-1850 site leveling
4. No other historic resources



# PRESENT



## COMMUNITY ENGAGEMENT TIMELINE

### RECENT MILESTONES

- 2008** - NYCDOT Archeological consultants determined that there was an African Burial Ground underneath the Bus Depot
- 2009** - The Harlem African Burial Ground Task Force was formed, co-chaired by Speaker Melissa Mark-Viverito and Rev. Dr Patricia A. Singletary
- 2011** - At New York State Senate hearing, Metropolitan Transportation Authority acknowledged existence of a colonial cemetery under the Bus Depot
- 2015** - MTA ceased operations on site began relocation to Mother Clara Hale Bus Depot
  - The Speaker's Office convened meetings with the Harlem African Burial Ground Task Force and East 126th Street Bus Depot to discuss goals for the site's redevelopment
  - EDC engaged archeologists from AKRF to conduct archeological survey
- 2016** - East 126th Street Bus Depot Task Force, with the Harlem African Burial Ground Task Force establish redevelopment goals for site

### FUTURE MILESTONES

- 2016** - On September 27th, the public will have an opportunity to provide comment on the environmental review scope of work
  - Harlem African Burial Ground Task Force, with the East 126th Street Bus Depot Task Force and City agencies will continue to engage public about the redevelopment of the Bus Depot
- 2017** - The beginning of the ULURP process for the redevelopment of the site
- 2018** - After ULURP approvals, a Request for Proposals will be released to select a development team to redevelop the site and meet the public goals established by the Task Forces, community, and elected officials

WE ARE  
HERE

### PROGRAM DEVELOPMENT FEB - MAY 2016

Established site program (uses, sizes, square footage) that will be used as inputs for environmental review

- EDC and Speaker's Office met with HABG Task Force, Bus Depot Task Force, CB 11 committees
- Completed due diligence with relevant agencies

### ENVIRONMENTAL REVIEW (CEQR) AUG 2016 - FALL 2017

Environmental Assessment Statement (EAS) & Draft Scope of Work (DSOW) Released August 19, 2016

- Scoping hearing for Environmental Impact Statement (EIS): **September 27, 2016**
- Public Comments on DSOW accepted through: **October 7, 2016**

### UNIFORM LAND USE REVIEW PROCEDURE (ULURP) EARLY 2017 - FALL 2017

Certification marks the official start of the ULURP clock (approximately 7 months). Required reviews include:

- Community Board 11 (60 days)
- Borough President (30 days)
- City Planning Commission (60 days)
- City Council (60 days)



# FUTURE

## DESIGN GUIDELINES – BY EDC & HABGTF

EMBODYING THE GOALS AND SPIRIT OF THE VISION AND MISSION STATEMENT, THE BUS DEPOT SITE SHOULD FUNCTION AS A COHESIVE WHOLE, AN “URBAN VILLAGE” – CENTERED ON A BURIAL GROUND MEMORIAL AS ITS FOCAL POINT.

### HARLEM AFRICAN BURIAL GROUND MEMORIAL



#### BE ICONIC AND TIMELESS:

The particular features of the Harlem African Burial Ground memorial should tell the story of this site and simultaneously present a powerful, original, and universal statement about human suffering and sacrifice, energy and optimism, recognition and reconciliation.



#### EVOKE HISTORICAL SIGNIFICANCE AND IMPACT THROUGH EDUCATION, INTERPRETATION, AND EMPOWERMENT:

The connected indoor and outdoor elements of the memorial should provide a sacred space in which the solemnity and sacredness of the once desecrated hallowed ground can be acknowledged and prayers for enlightenment and peace can be offered.



#### FOSTER A SACRED SENSE OF PLACE:

The memorial should be an elegant, versatile, sacred place where individuals and groups can assemble for education, dialogue, performance, meditation and prayer.

### NEW EAST HARLEM VILLAGE



#### MAINTAIN CONNECTIVITY:

The entire site should provide easy connectivity, both physical and visual, to the constantly evolving surrounding neighborhood, including infrastructure and amenities such as Harlem River Drive, Willis Avenue Bridge, 2nd Avenue Subway, and Harlem River Park. The consecrated memorial should be designed in conjunction with these and the rest of the site’s programmatic goals and requirements; spacious transitions should characterize a graceful relationship between the memorial and the rest of the site and neighborhood.



#### ENCOURAGE A SPIRIT OF WELCOME:

Ensuring welcome for residents, New Yorkers, and national and international visitors, the entire site should contain diverse spaces and architectural forms, as well as easy connections among them, in which residence, local commerce, informal recreation, education, ceremony, and sacred reflection are all made possible.



#### “GREEN” THE SITE TO THE HIGHEST STANDARDS, WHILE EMBRACING ITS HISTORICAL, CULTURAL AND SPIRITUAL CONNECTIONS TO THE HARLEM RIVER:

The whole site should be developed according to the highest national and international environmental justice principles and Leadership in Energy and Environmental Design (LEED) standards that are practical for the site. Architectural and landscape design elements, such as water features, should reflect the site’s centuries-old, practical and spiritual connections to the Harlem River. The site’s design should inform and inspire future infrastructure and parks projects nearby.



# FUTURE

## URBAN MEMORIAL PRECEDENTS

### IRISH HUNGER MEMORIAL - 2002

Sponsored by the Battery Park City Authority, the Irish Hunger Memorial commemorates the Great Irish Famine and migration of 1845-50. A contemplative space where visitors can learn about the famine and its connections to world hunger today, the design was developed by artist Brian Tolle, landscape architect Gail Eileen Wittwer, and 1100 Architect.



Source: 1100 Architect

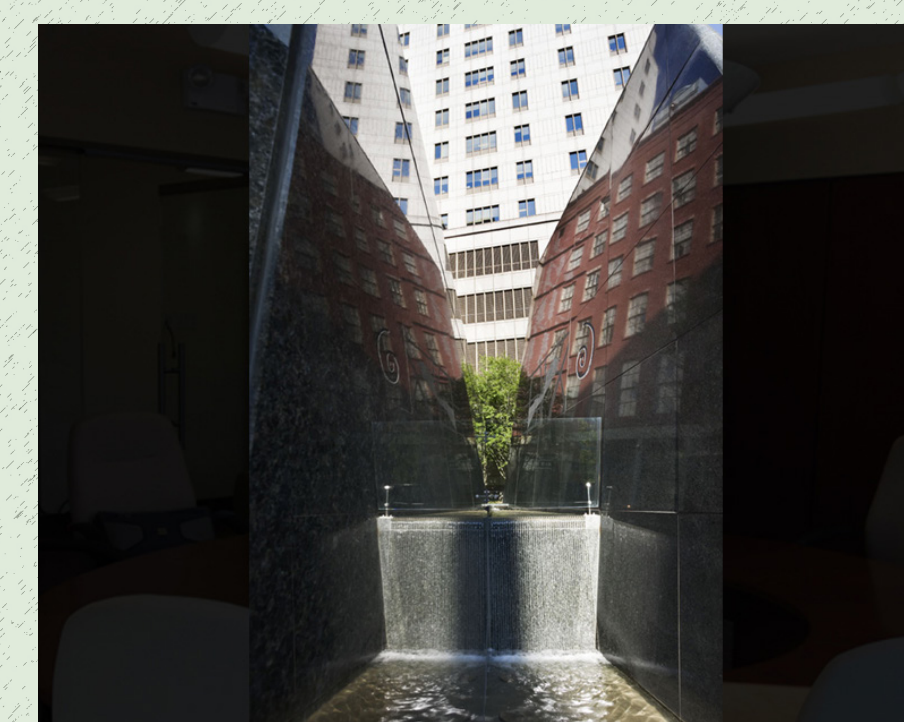


### AFRICAN BURIAL GROUND NATIONAL MONUMENT - 2007

In the 17th century, New York's African descendant population were not allowed to bury their dead within the city boundaries. As a result, a 5.5 acre plot north of Wall Street was used as a cemetery. Seen in historical maps as the "Negroes Burying Ground", it is believed to be the final resting place for 20,000 enslaved and free Africans. Due to development pressures in the 19th century, the burial ground was desecrated. Rediscovered in the 20th century, it is largely known as one of America's most significant archeological finds and as the oldest and largest known urban African cemetery. The memorial is managed by the National Park Service.



Source: By Dmadeo - Own work, CC BY-SA 3.0, <https://commons.wikimedia.org/w/index.php?curid=2935382>



Source: <http://aarrisatepa.com/NEW/abg.html>



# FUTURE

## URBAN MEMORIAL PRECEDENTS

### UNITED NATIONS SLAVERY MEMORIAL - 2015

The permanent memorial to honor the victims of slavery and the Transatlantic slave trade at the United Nations, entitled "The Ark of Return," is designed by Rodney Leon, an American architect of Haitian descent. It pays tribute to the courage of enslaved Africans, abolitionists, and unsung heroes while promoting greater recognition of the contributions made by slaves and their descendants to societies worldwide.



Source: Forecast Public Art - Photo by Martin Dixon



### NEW YORK CITY AIDS MEMORIAL - 2016

This memorial will honor more than 100,000 New York City men, women, and children who have died from AIDS and will commemorate the efforts of the caregivers and activists who responded heroically to the crisis. Serving as a place to remember and reflect, the memorial will also renew awareness and inspire action by current and future generations through educational programming.



Source: NYC AIDS Memorial







# FUTURE | ACTIVITY



## NYC MEMORIAL PRECEDENTS

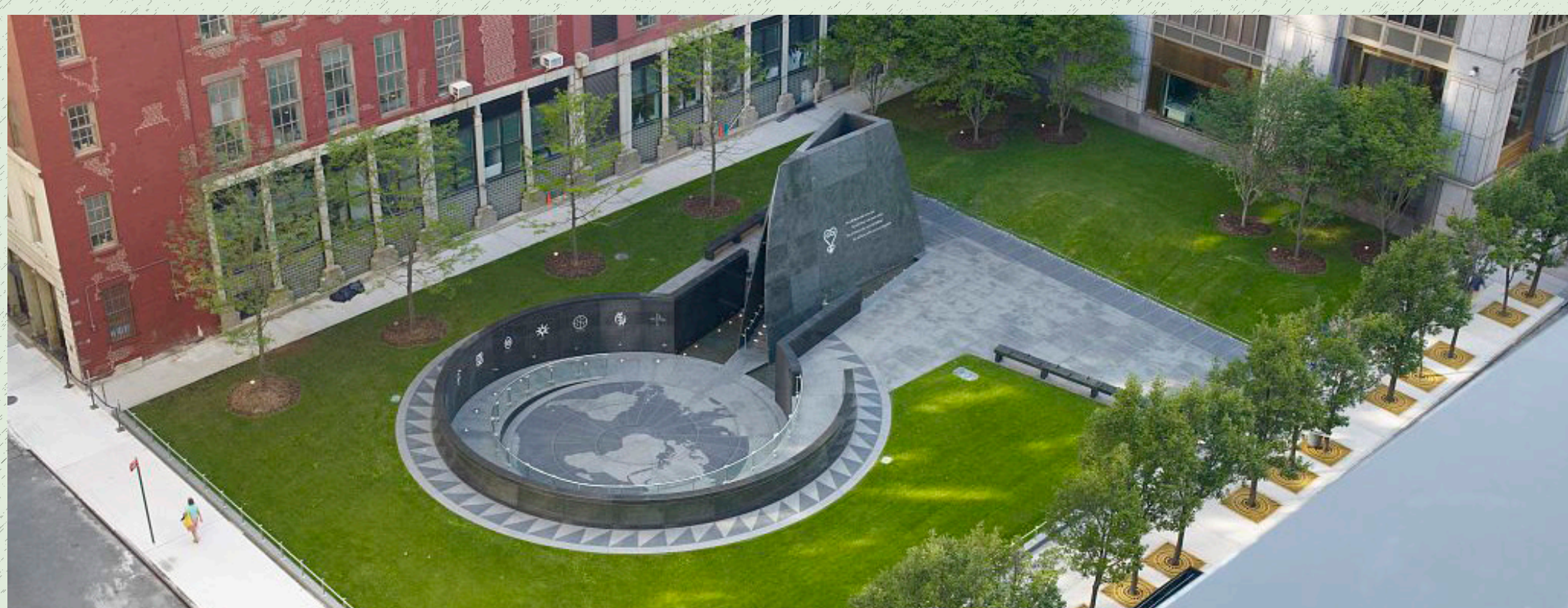
PLACE A BLUE MARKER NEXT TO THE MEMORIAL THAT MOST RESONATES WITH YOU

WHY DOES THIS MEMORIAL RESONATE WITH YOU?  
GRAB A POST IT-FOR YOUR COMMENTS

### IRISH HUNGER MEMORIAL - 2002



### AFRICAN BURIAL GROUND NATIONAL MONUMENT - 2007



### UNITED NATIONS SLAVERY MEMORIAL - 2015



### NEW YORK CITY AIDS MEMORIAL - 2016



# MEMORIAL-INSPIRED ART ACTIVITY

## FOR MEMORIAL-INSPIRED ART

NYCEDC INVITES THE COMMUNITY TO CONTRIBUTE ARTWORK THAT IS INSPIRED BY THE DEEP SIGNIFICANCE AND LONG-STANDING HISTORY OF THE BURIAL GROUND SITE.

## IDEAS FOR ARTWORK

1. Type of 'wayfinding' indicator and marker of memorial space
2. Mural, Painting, Sign, Sculpture, Landscape

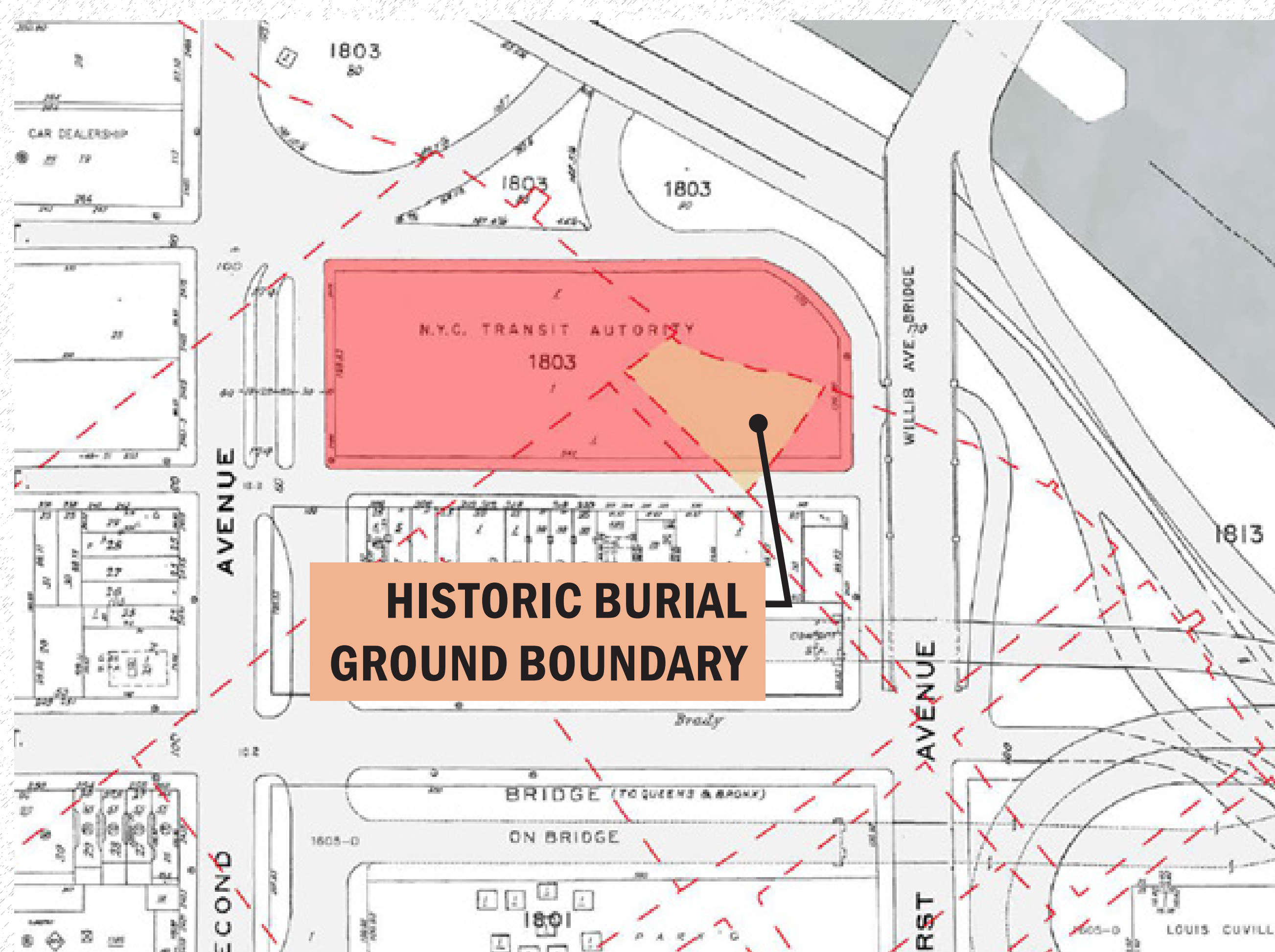
## GUIDING QUESTIONS FOR THE MEMORIAL MARKER DESIGN

- Is it 2d, 3d, fixed, movable?
- Is it a sign, or a monument? Is it sculptural in form?
- Can you interact with it? Can you occupy it?
- What is the size, color, brightness, reflectivity, transparency?
- What feelings does it evoke?

## SUBMISSION INSTRUCTIONS

Please submit a Title for the piece and a brief paragraph that explains your thoughts behind its creation. Please include your name and email address with your submission. **We will accept artwork today, or if you would like more time, please submit your creations to [E126Project@edc.nyc](mailto:E126Project@edc.nyc) by September 30, 2016.**

## SITE



Source: <https://harlemafricanburialground.wordpress.com/>

