

# ADAPTING LOWER MANHATTAN TO CLIMATE CHANGE, FOR THIS GENERATION AND THE NEXT

Climate change is one of the most urgent and existential threats of our time.

Lower Manhattan, a critical place that helps hold the city and region together, is at risk of daily flooding, more intense rain, and more severe coastal storms.

**We're here tonight to have a conversation about:**

- The role Lower Manhattan plays in the city and region
- Flood risk and how it will increase in the future with climate change
- How the City is adapting Lower Manhattan and why we need to study both on-land and in-water resilience solutions
- The planning process for the Financial District and Seaport and how you can stay involved

**We know it will take all of us to solve this together. Tonight, we want to hear from you:**

- What are your questions and concerns about climate change?
- What does resilience mean to you?
- What do you think is most important for the FiDi-Seaport Resilience Plan to achieve?
- What do you want to learn more about?



# WHAT DOES LOWER MANHATTAN MEAN TO YOU?

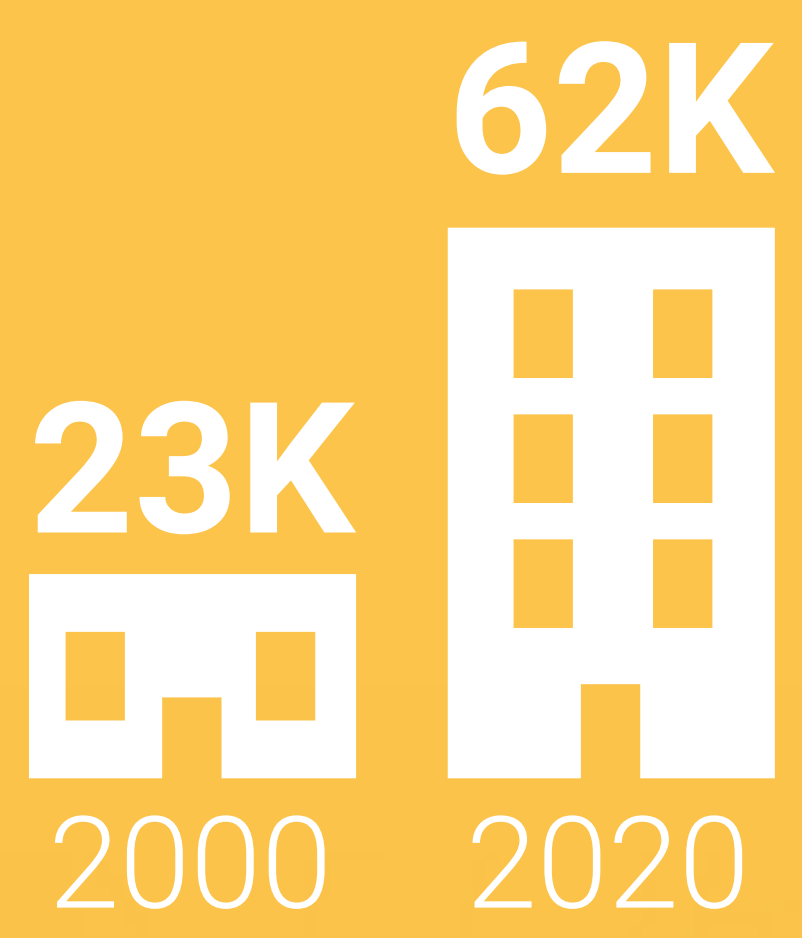




# A CENTER OF CULTURE, COMMUNITY, AND CIVIC LIFE

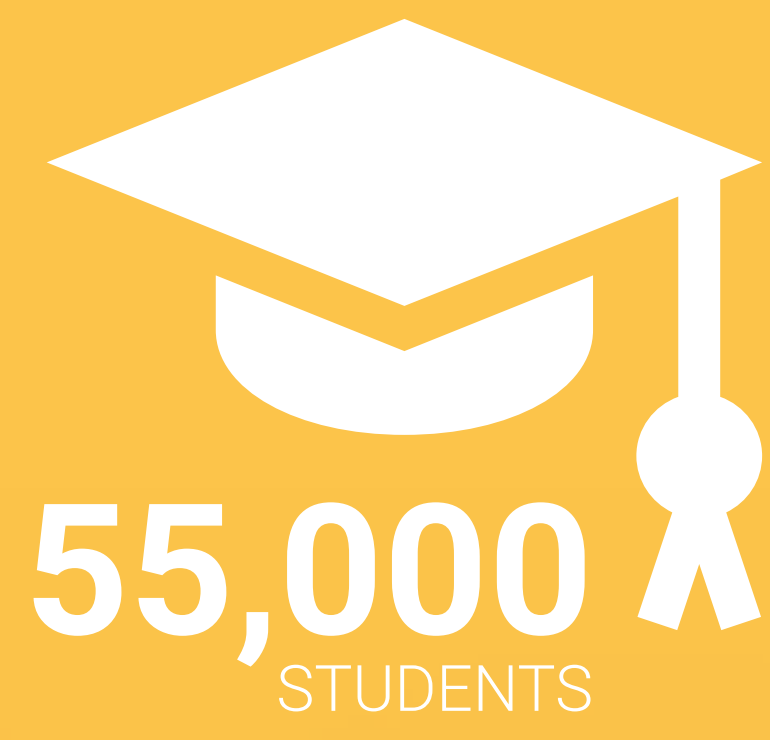
TODAY, IN ADDITION TO A ROBUST WORKFORCE, LOWER MANHATTAN HAS A GROWING RESIDENTIAL COMMUNITY AND A THRIVING STUDENT POPULATION, AND IS A MAJOR DRAW FOR NEW YORKERS AND VISITORS ALIKE.

## RESIDENTS



**170%**  
INCREASE IN  
RESIDENTS IN  
LOWER MANHATTAN

## STUDENTS



**21**  
HIGHER LEARNING  
INSTITUTIONS

## VISITORS



**17.7**  
MILLION  
ANNUAL VISITORS TO  
MAJOR ATTRACTIONS  
IN THE AREA

## CIVIC LIFE



**550**  
MAJOR CIVIC EVENTS IN  
THE LAST DECADE, SUCH  
AS PARADES, FESTIVALS,  
PROTESTS, AND MARCHES



REST REBELLION

=

FOREST FOR FUT

### STATISTICAL SOURCES:

Residents: Downtown Alliance  
Workers: US Census LEHD LODES  
Students: Downtown Alliance  
Visitors: Audience Research & Analysis  
Civic: NYC Mayor's Office of Citywide Event Coordination and Management

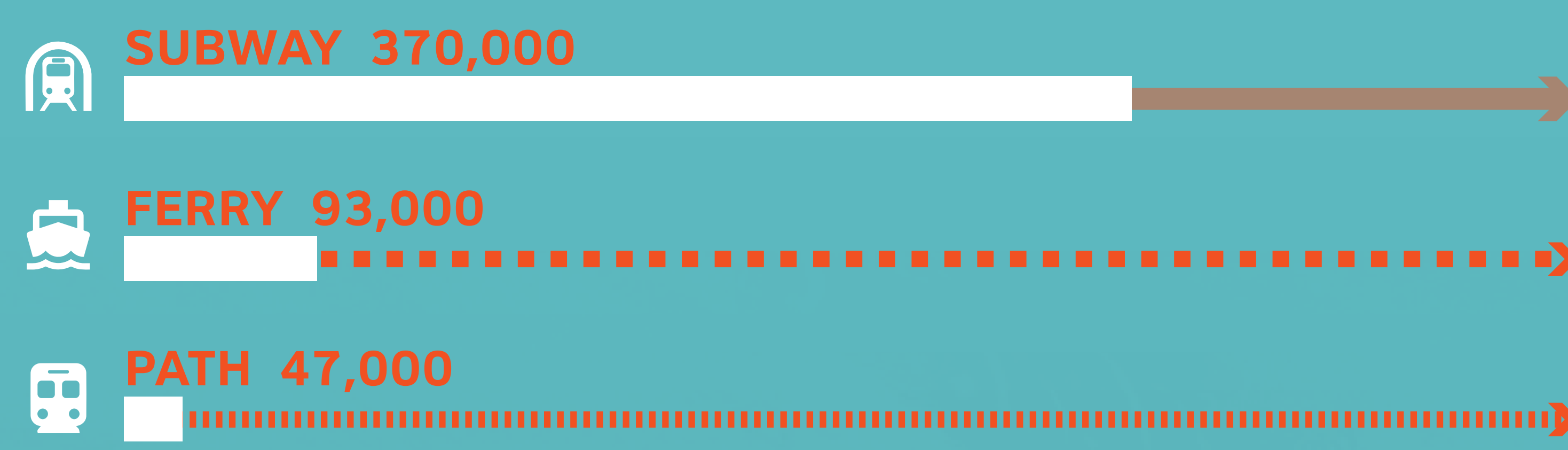
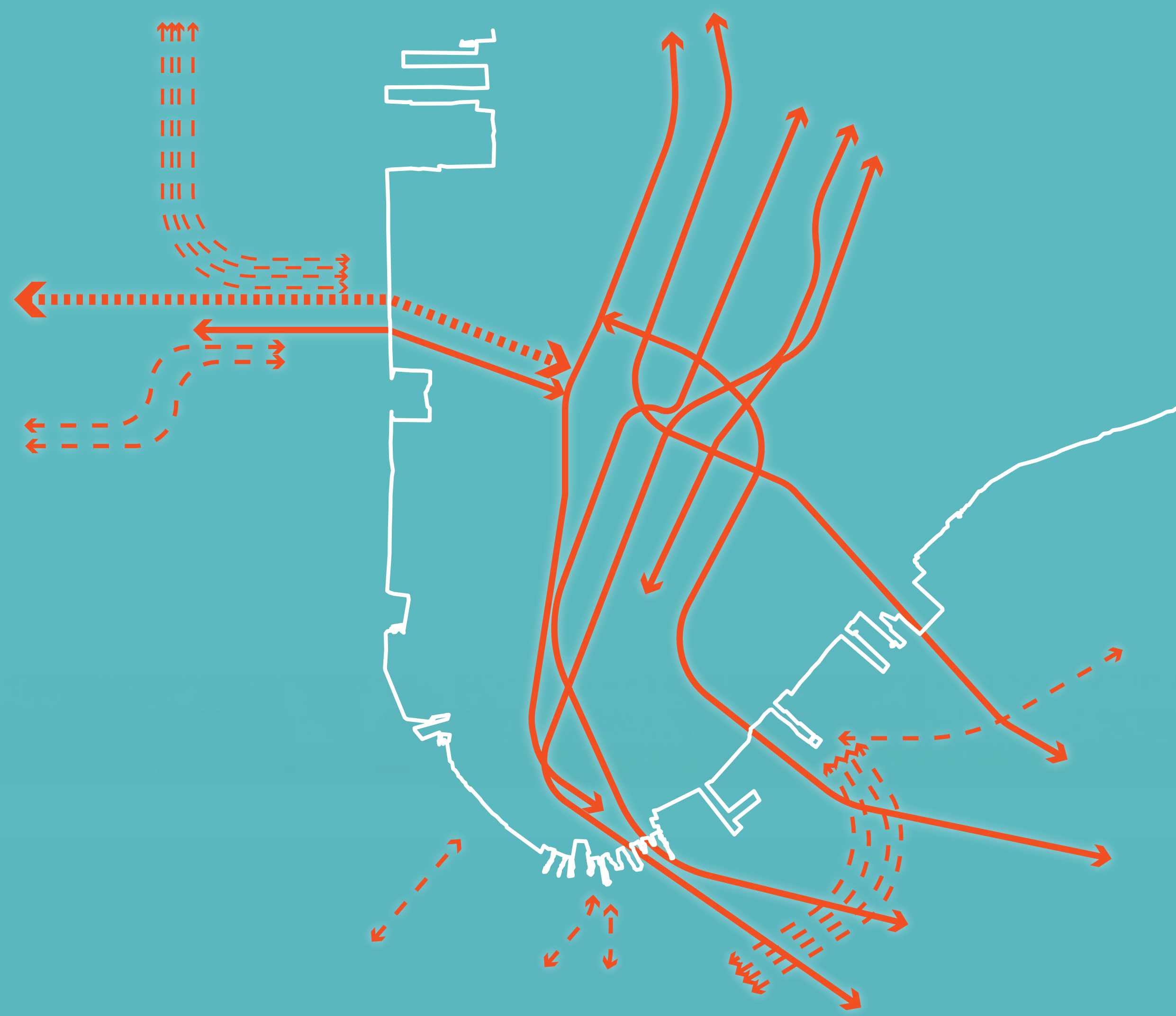
### IMAGE SOURCES:

Shadia Fayne Wood. Broadway and Cortland Street, Manhattan, New York. 2019. Survival Media Agency, Flickr.



# A CRITICAL HUB OF TRANSPORTATION FOR THE CITY AND REGION

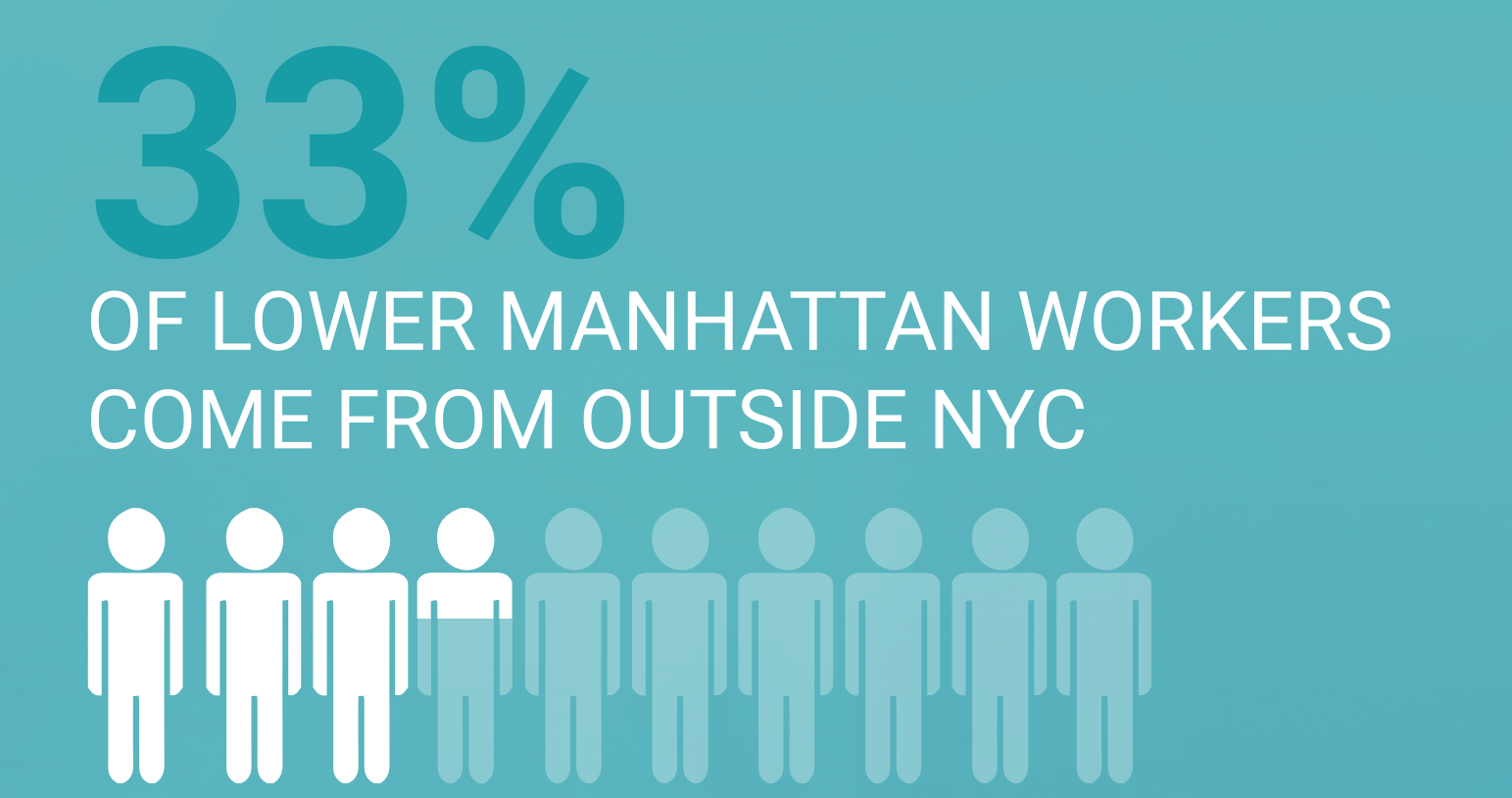
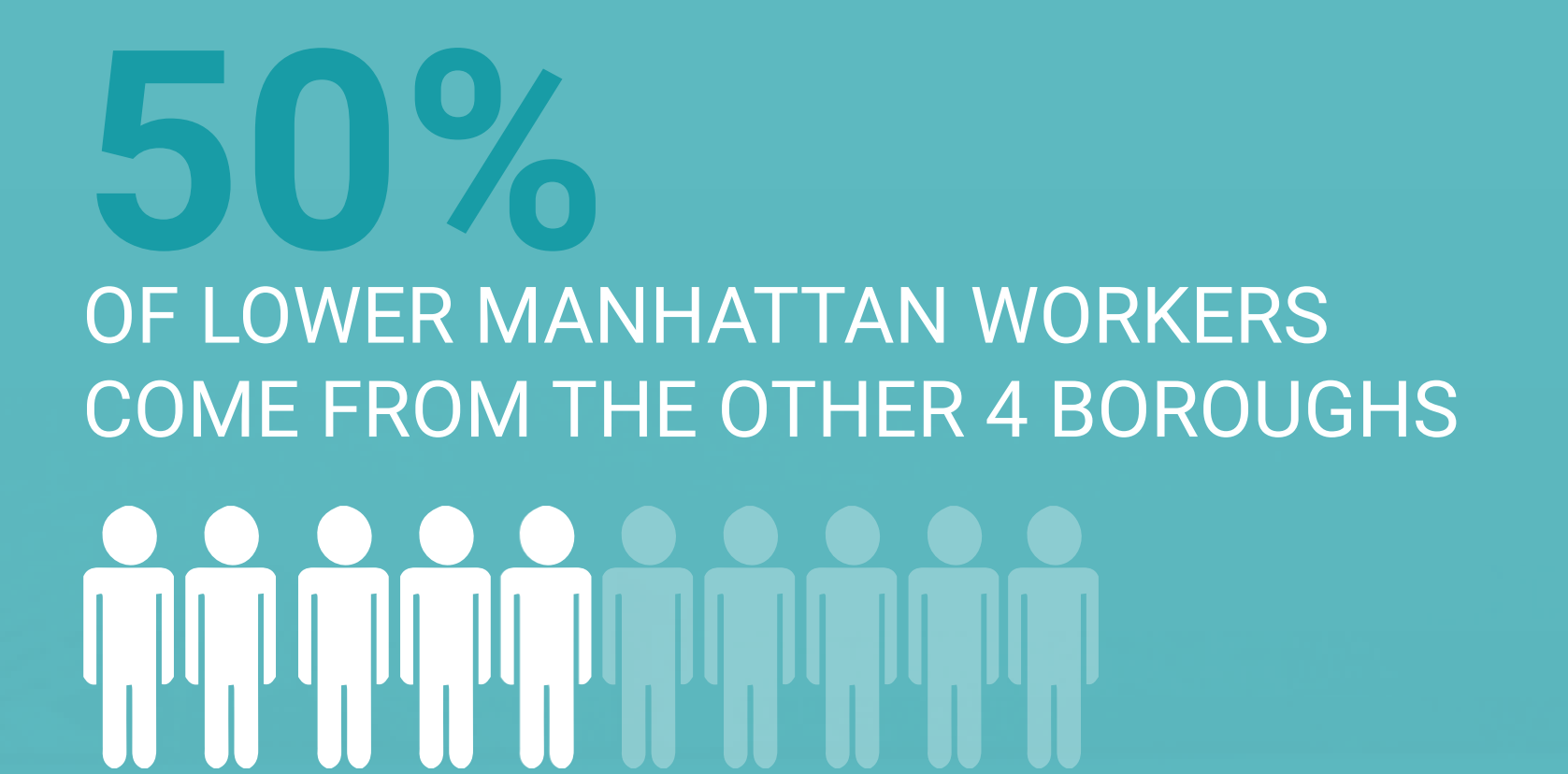
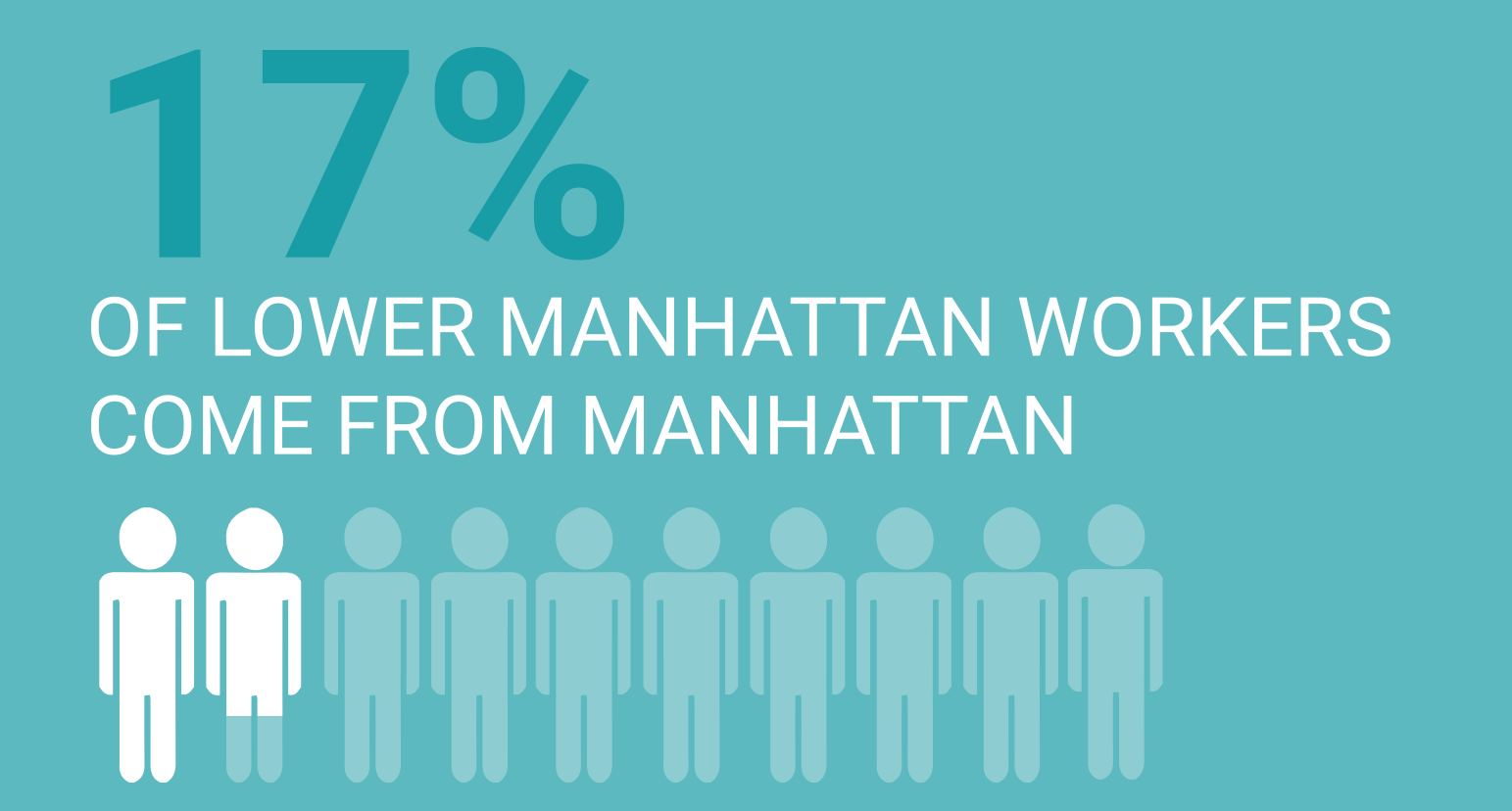
WHAT HAPPENS IN LOWER MANHATTAN AFFECTS ALL OF NEW YORK CITY.



19 OUT OF 28 NYC SUBWAY LINES AND 17 COMMUTER FERRY ROUTES PASS THROUGH LOWER MANHATTAN.

EACH DAY, 370,000 SUBWAY RIDERS, 93,000 FERRY RIDERS, AND 47,000 PATH RIDERS USE TRANSPORTATION IN LOWER MANHATTAN.

OF THE 290,000 PEOPLE WHO WORK IN LOWER MANHATTAN, MORE THAN 4 OUT OF EVERY 5 WORKERS LIVE OUTSIDE MANHATTAN



STATISTICAL SOURCES:

Routes + Ridership: MTA, Downtown Alliance  
Journeys to Work: US Census LEHD LODES

IMAGE SOURCES:

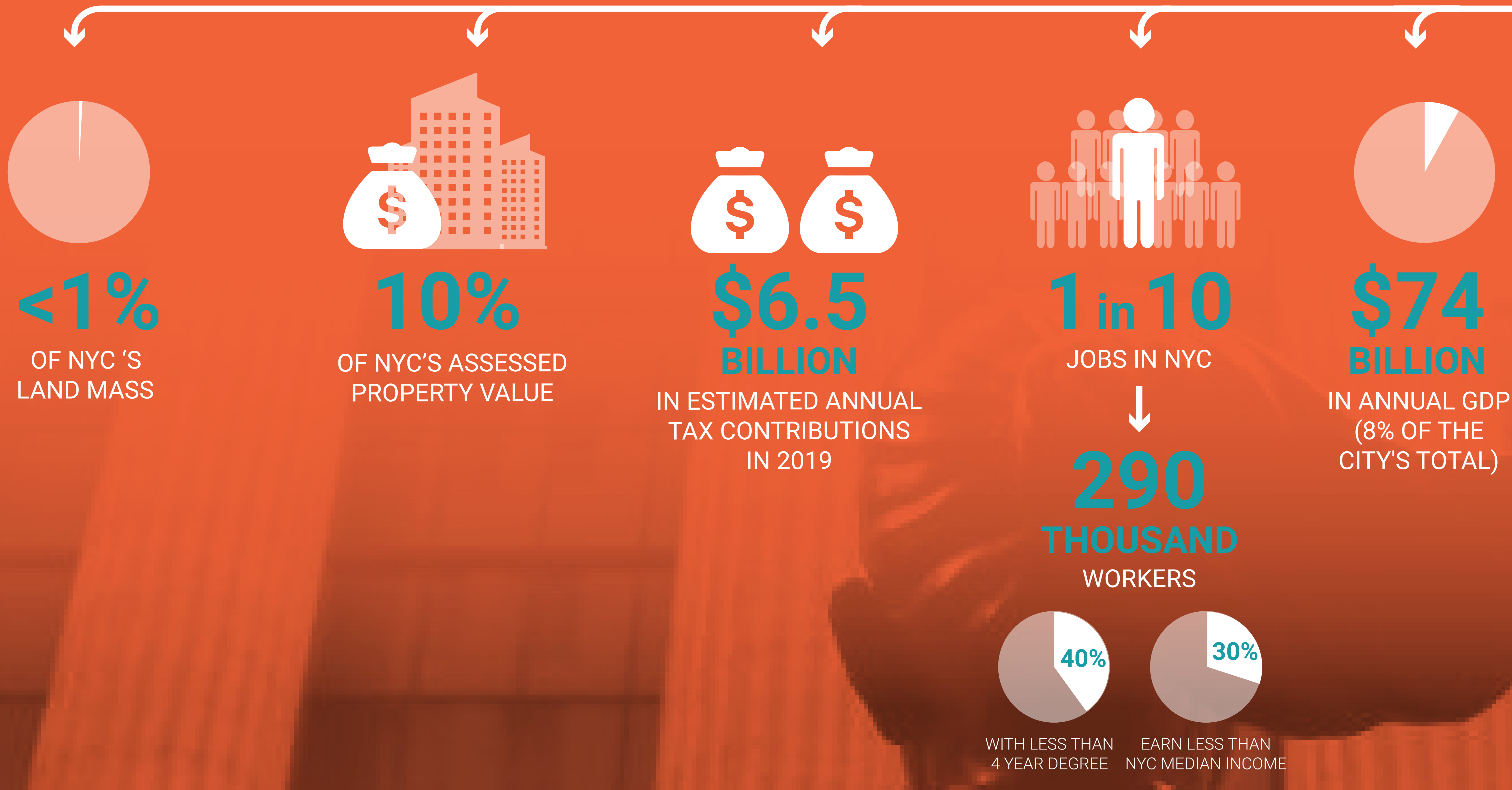
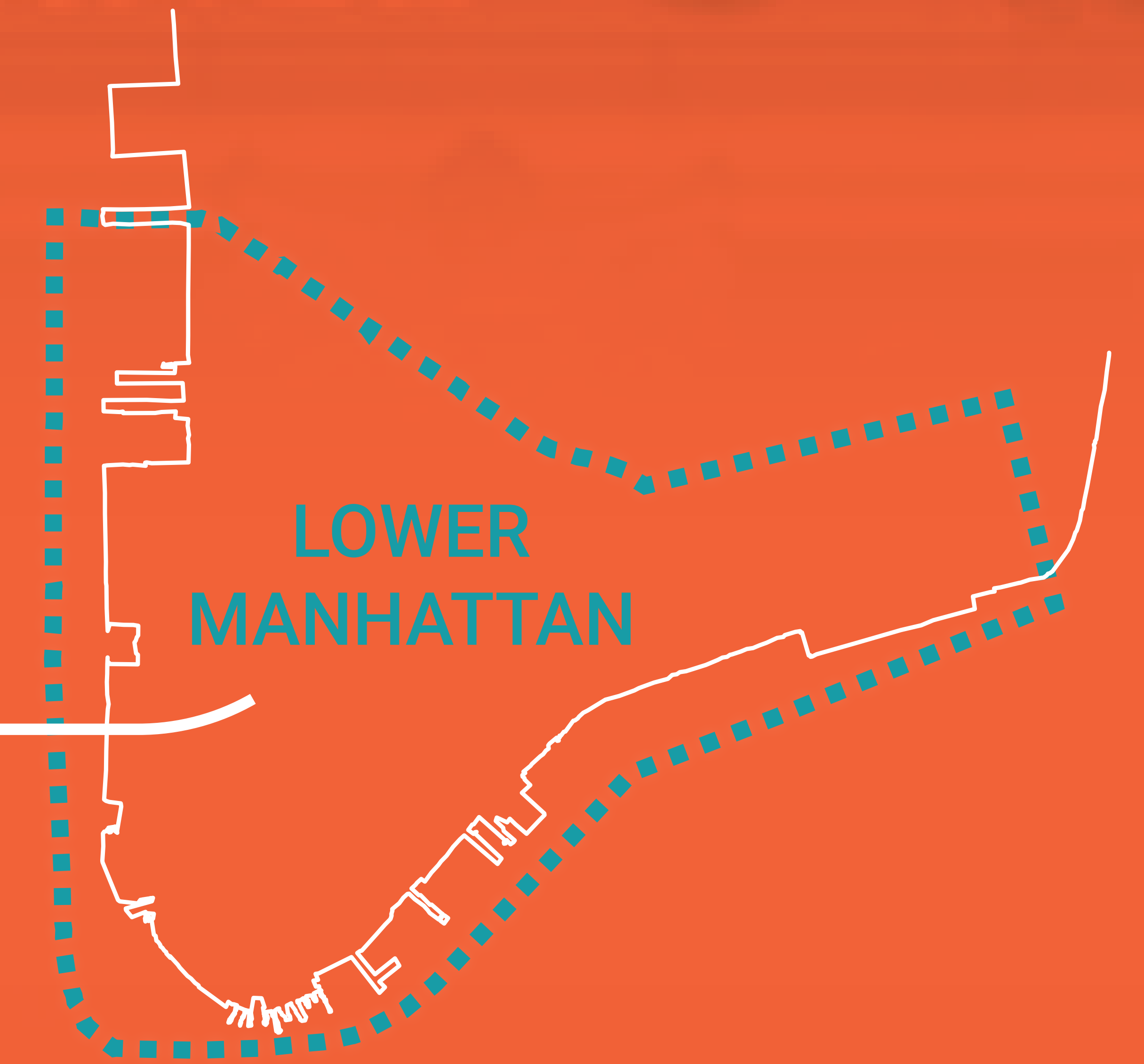
Detroit Photographic Company, South Street Seaport, Circa 1897-1924. Beinecke Rare Book & Manuscript Library, Yale University. Wikimedia Commons.  
Rémi Stoskopf, South Street Seaport, 2012. Wikimedia Commons.



# A DRIVER OF THE CITY'S ECONOMY AND WORKFORCE

NEW YORK STOCK EXCHANGE

LOWER MANHATTAN PLAYS A MAJOR ROLE IN OUR ECONOMY WITH A DIVERSE RANGE OF JOBS FOR NEW YORKERS FROM ALL OVER THE CITY.



**SOURCES:**  
 Assessed/Property Value: NYC Dept of Finance  
 Job Percentages: US Census LEHD LODES  
 GDP and Percent Landmass: EMSI Q1 2020  
 Estimated Tax Contributions: Downtown Alliance

**IMAGE SOURCES:**  
 Brendan McDermid. Fearless Girl. 2019. Reuters.