



# Hunts Point Vision Plan Task Force Update

---

May 1, 2012



# Meeting Agenda

---

## ☐ Welcome

## ☐ Vision Plan Update

- Hunts Point Workforce1 Career Center
- South Bronx Greenway
- Food Distribution Center Development
  - Produce Market Redevelopment
  - Halleck Industrial Development Site RFP
  - Alternative Fuel Station
  - NYCDOT Hunts Point Clean Trucks Program
- Sheridan Expressway-Hunts Point Land Use & Transportation Study

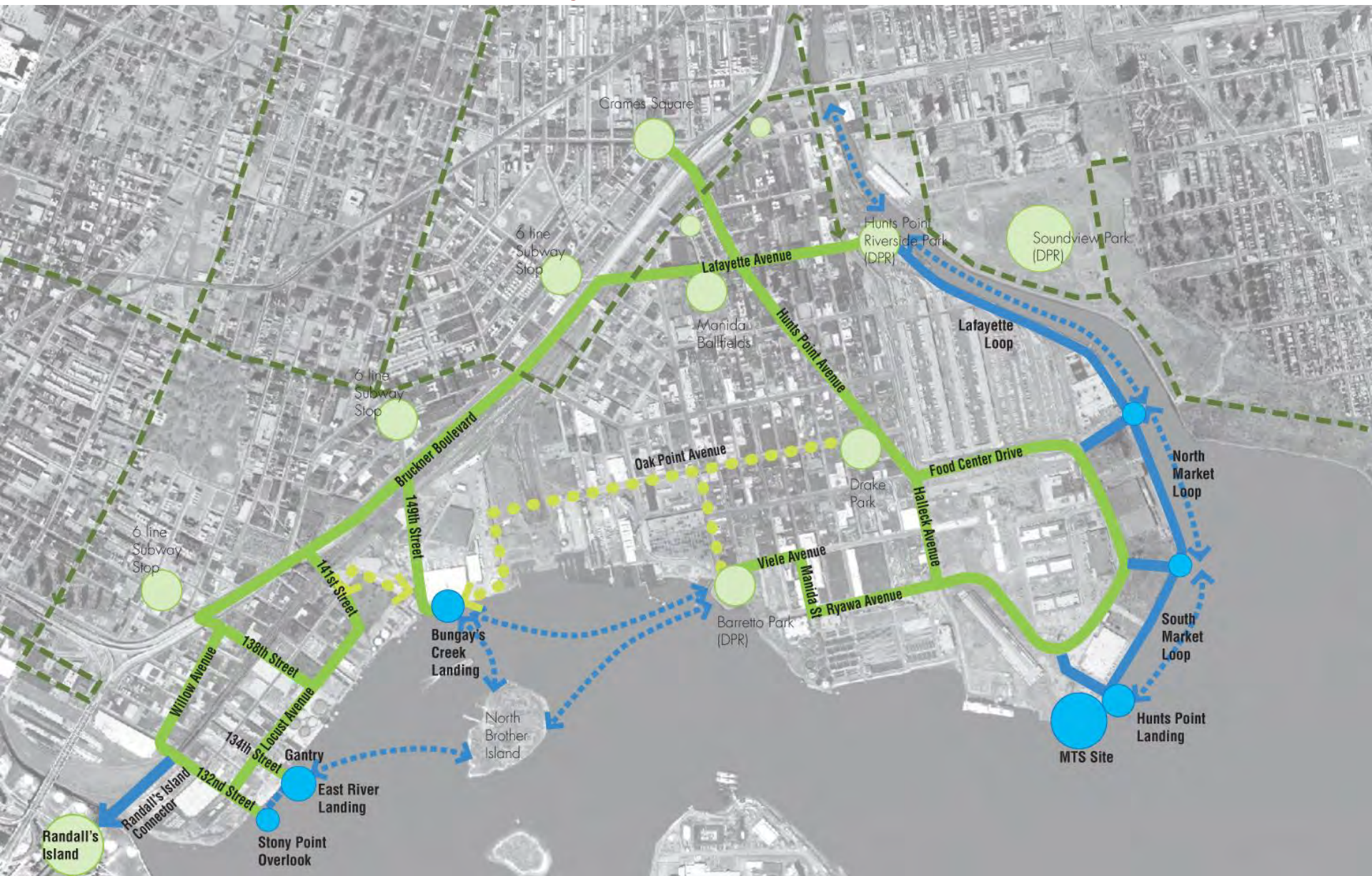
# Hunts Point Workforce1 Career Center (HP WF1CC)

---

- Job placements overall through the Hunts Point WF1CC:
  - 2009 = 1,030
  - 2010 = 1,318
  - 2011 = 1,366
  - 2012 (January – April) = 476
- Hunts Point residents placed system-wide (all 5 boroughs):
  - 2009 = 839
  - 2010 = 625
  - 2011 = 852
  - 2012 (January – April) = 160
- Hunts Point Community Partners
  - 2011: 83 placements, 138 referrals to job opportunities
  - 2012 Goal: 150 partner placements
  - Worked with 26 Community Partners in 2011 including:
    - Bronx Works
    - CUNY – Hostos
    - Department of Labor
    - F.E.G.S
    - Goodwill
    - Job Corps
    - New York Public Library
    - NYC Department of Parks and Recreation
    - Southeast Neighborhood Centers
    - SUNY – Bronx Educational Opportunities Center



# South Bronx Greenway





# SBG: Phase I Project – Lafayette Avenue Streetscape



Anticipated construction completion: Substantially complete



# SBG: Phase I Project – Hunts Point/Spofford Ave Streetscapes



Anticipated construction completion: Substantially complete



# SBG: Phase I Project – Hunts Point Landing – current concept



Anticipated Construction Completion: Late June / Early July 2012



# SBG: Phase I Project – Food Center Drive



Anticipated Construction Start: Winter 2012



# SBG: Phase I Project – Randall’s Island Connector



Anticipated Construction Start: Spring 2013



# Produce Market Redevelopment



## Project Update

- Renewed lease with Coop for 3 years
- Performing design and environmental due diligence
- Pursuing City, State & Federal funding
  - NY Regional Council Award: \$28.5M
  - Anticipated CMAQ Award: \$25M
  - Submitted TIGER Application: \$15M

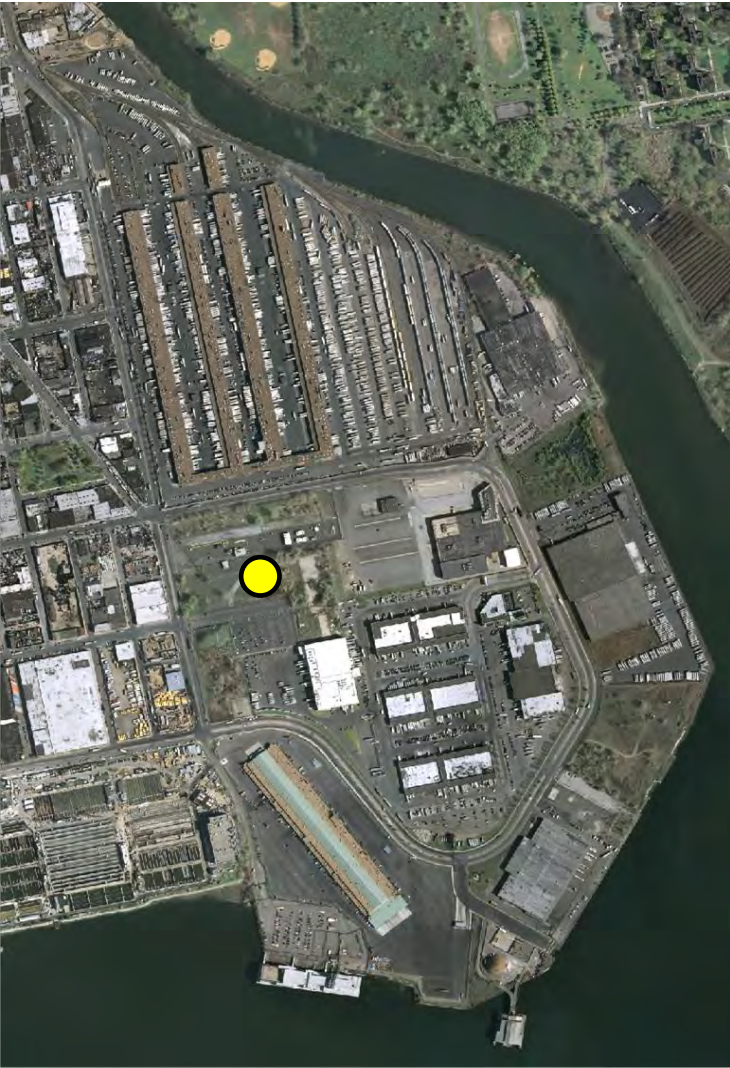
## Project Goals

- Increase annual rail volume
- Decrease truck idling time and diesel emissions
- Replace diesel-powered trailers and emissions with new refrigerated warehouse facilities
- Increase access to affordable and NYS produce
- Reserve space for a waterfront greenway that provides opportunities for employees to bicycle and walk to work





# Halleck Industrial Development Site



● Site of Proposed Facility

## New Development Site in the Food Distribution Center

- 425,000 SF (9+ acres)
- Vacant and shovel-ready site
- Access to both Halleck Street and Food Center Drive
- Proposals for food-related uses do not require ULURP approval process
- NYCEDC performed Interim Remedial Measure, currently awaiting DEC approval letter

## RFP Released in June 2011

- Priority for food-related uses; also open to industrial and ancillary retail uses
- New “Open-RFP” concept allows for longer timeline to accommodate industrial tenant needs
  - Next submission date May 23, 2012
- Respondents encouraged to minimize additional traffic impacts
- Option for developers to pursue NYCEDC financing for construction
- Respondents required to propose how they would maximize job creation and local hiring

# Alternative Fuels Facility



**Selected Developer: Atlantis Management Group**

## Milestones Achieved

- FDNY variances for E85 and B20 secured
- ULURP approval
- PDC conceptual and preliminary design approval

## Program

- Biodiesel, ethanol, CNG, with limited conventional fuels
- Truck maintenance facility for truck conversions
- Complementary uses include food retail, education center
- Targeted local hiring plan and workforce development goals
- Dedicated funding for alt fuels marketing campaign

## Schedule

- *Initial Due Diligence & CEQR*  
Completed Summer 2011
- *ULURP & Approvals*  
Completed Winter 2012
- *SDOT Project Design Review & Approval*  
Spring – Fall 2012
- *Remediation & Construction*  
Winter 2012 – Summer 2014

● Site of Proposed Facility - Corner of Halleck Street and Food Center Drive, Hunts Point



# NYCDOT Hunts Point Clean Trucks Program

NEW YORK CITY



## HUNTS POINT CLEAN TRUCKS PROGRAM

### Eligibility

Truck owners and operators meeting the following guidelines may be eligible to participate in the CTP.

- ❖ History of Moving Goods in Hunts Point and/or Port Morris
- ❖ Truck(s) are Class 3 to Class 8
- ❖ Truck(s) with a Engine Model Year 2003 and Older

For more information, visit [www.huntspointctp.com](http://www.huntspointctp.com)

# Sheridan Expressway-Hunts Point Land Use & Transportation Study

- NYSDOT has been studying the Bruckner Sheridan interchange for an EIS
- The State requested input from the City
- The City received a \$1.5 million federal planning grant to conduct an analysis of the land use and transportation implications of the project
- The study includes:
  - Community Visioning Process (Charrette held October 15, 2011)
  - Traffic network analysis and Hunts Point truck study
  - Land use analysis of the surrounding area and the options identified during the community visioning process
  - An economic impact analysis and a cost-benefit analysis incorporating sustainability measures.





# Sheridan Expressway - Hunts Point Land Use & Transportation Study

• A **community working group** made up of representatives from the four local Community Boards, elected officials, business owners, and community organizations, has met regularly since the summer to provide feedback and share information.

## Timeline:

- Community Working Group started Summer '11
- Public Visioning Fall 2011
- Public Charrette October 15, 2011
- Traffic Data Collection Winter 2012
- Screening Analysis Results Spring 2012
- Scenario Development Summer 2012
- Comparative Analysis Fall 2012
- Draft Recommendations Fall-Winter 2012
- Final Recommendations June 2013

If you have any questions or want to join the e-mail notification list, please contact us at:

[Sheridan\\_hp@planning.nyc.gov](mailto:Sheridan_hp@planning.nyc.gov)



# Sheridan Expressway - Hunts Point Land Use & Transportation Study

## Data collection throughout South Bronx

- Intersection counts (6-10 am & 4-8 pm)
- Daily classification counts
- Weekly automatic traffic recorder counts
- Travel time GPS surveys (6-10 am & 4-8 pm)
- Aerial photo surveys (6-10 am & 4-8 pm)
- Daily commercial license plate matching  
(over 200,000 commercial veh. observed)

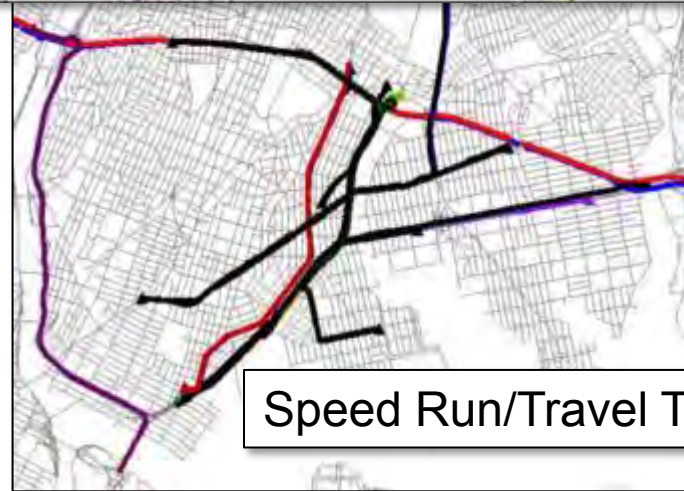
## Count Data Locations



## Aerial Photo Survey Locations



## Speed Run/Travel Time Routes





# Discussion

---

