



# Hunts Point Vision Plan Task Force Update

---

November 20, 2013



New York City Economic Development Corporation

# Meeting Agenda

---

## ❑ Welcome

## ❑ Vision Plan Update

- Hunts Point Workforce1 Career Center
- South Bronx Greenway
  - Food Center Drive
  - Hunts Point/Spofford/Lafayette Avenues
  - Hunts Point Landing Reopening and Programming
  - Randall's Island Connector
- Food Distribution Center Development
  - Alternative Fuels Facility
  - Halleck Industrial Development Site
  - Site F
- NYCDOT Hunts Point Clean Trucks Program

## ❑ Discussion

# Hunts Point Workforce1 Career Center (HP WF1CC)

---

## **Jobseekers served by Hunts Point WF1CC**

- In 2013 (YTD), Hunts Point has served **5,835** customers of which **1,101** were Hunts Point residents.

## **Job placements overall through the Hunts Point WF1CC**

- 2012 = **1,198**
- 2013 (YTD) = **906**

## **Hunts Point residents placed through the Hunts Point WF1CC**

- 2012 = **116**
- 2013 (YTD) = **94**

## **Hunts Point residents served system-wide (all 5 boroughs)**

- 2013 (YTD) = **5,655**

## **Hunts Point residents placed system-wide (all 5 boroughs)**

- 2012 = **522**
- 2013 (YTD) = **485**

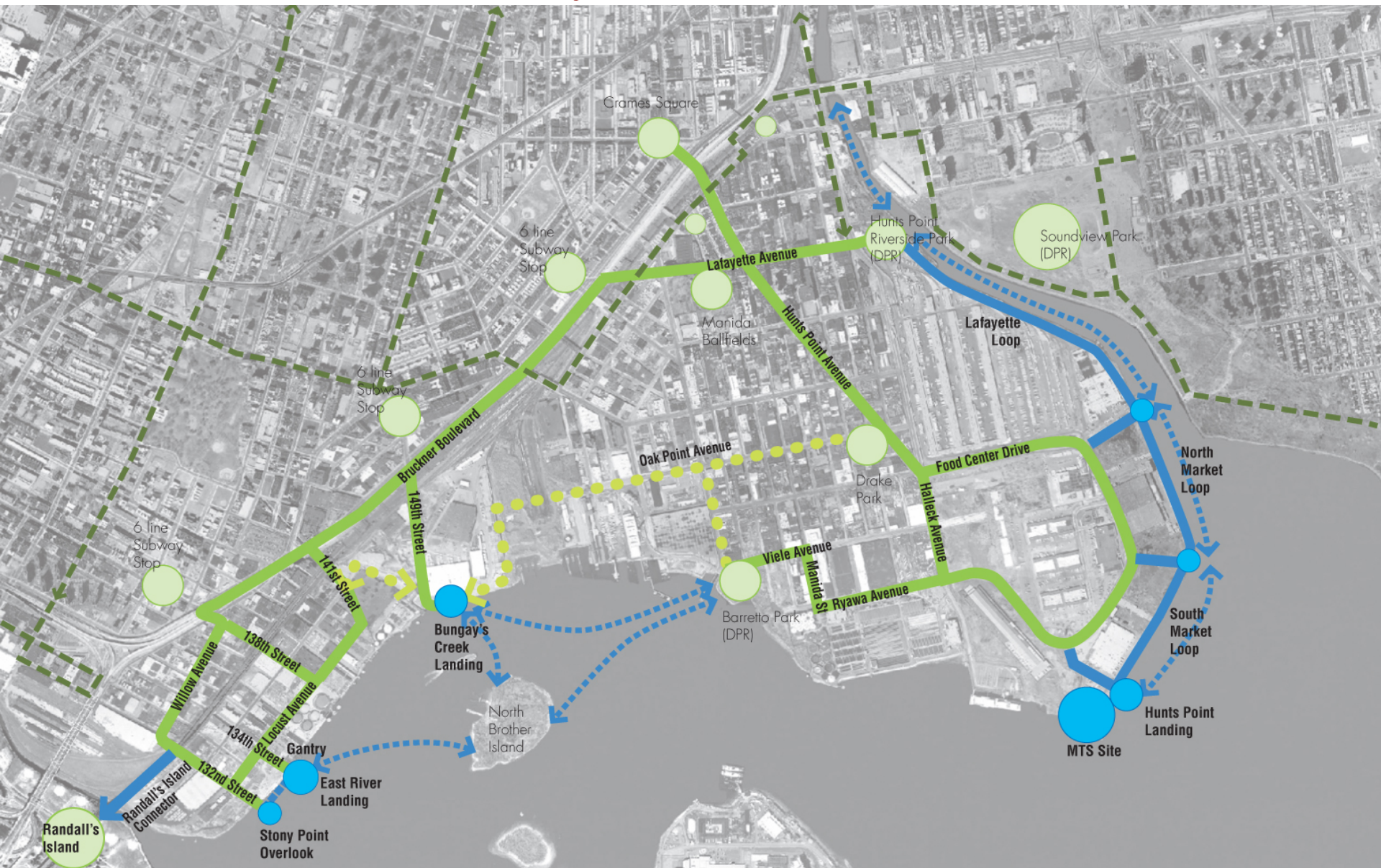
## **Individualized Training Grants (ITGs)**

- In 2013 (YTD), Hunts Point has issued **1,298** ITGs of which **100** were Hunts Point residents.

## **Hunts Point Community Partners**

- 2013 (YTD) = **131** placements
- Hunts Point is working with multiple Community Partners in 2013 including: Department of Labor, NYC Department of Homeless Services, SOBRO

# South Bronx Greenway



# SBG: Phase I Project – Food Center Drive



Construction start: August 2013. Road reversal: Week of November 18<sup>th</sup>

# SBG: Phase I Project – Hunts Point/Spofford/Lafayette Avenues



Anticipated Construction Completion: Punch list to be completed late November/early December

# SBG: Phase I Project – Hunts Point Landing



# SBG: Phase I Project – Hunts Point Landing

## Sandy Repairs

- Physical repairs completed last week
- Park re-opened this week

## Programming

- Small grants competition RFP
- Springboard for 2014 programs
- Support programming in four areas:
  - Environmental education
  - Recreation and health
  - Cultural/Performance
  - Intern stipends for outreach, documenting impact, fundraising
- Size of grants will range (TBD)
- Preferences for:
  - Events that can be replicated and/or become regular programs
  - Partnerships with local groups



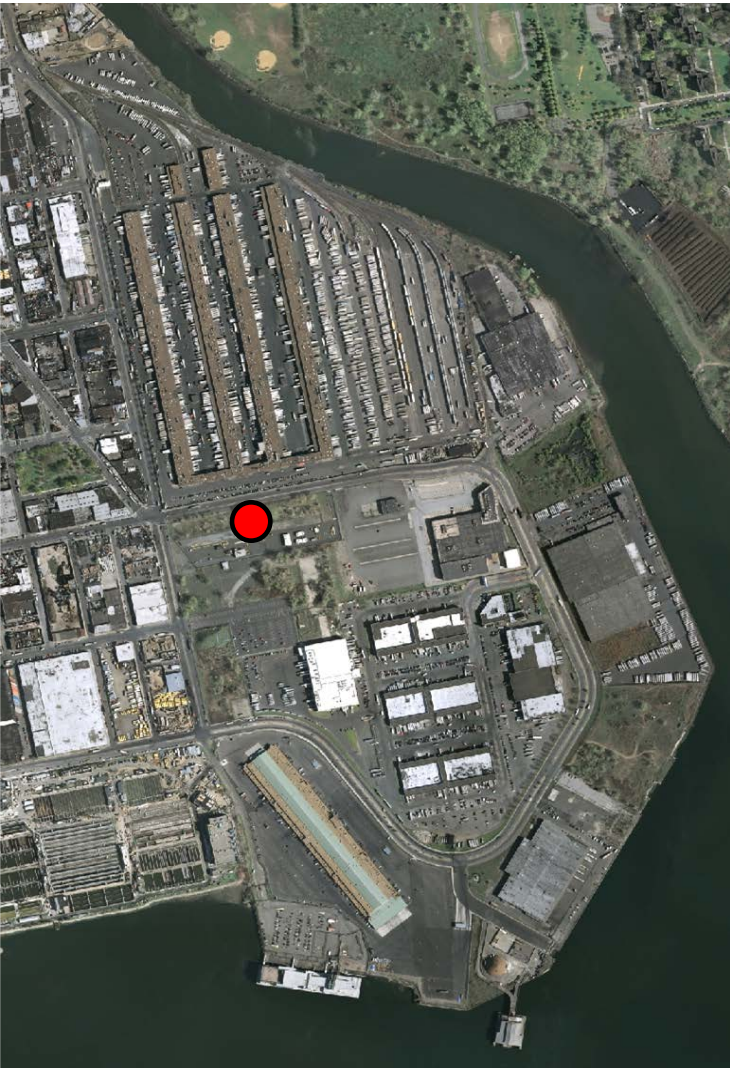


# SBG: Phase I Project – Randall's Island Connector



Anticipated Construction Start: Winter 2013

# Alternative Fuels Facility



**Selected Developer: Atlantis Management Group**

## **Milestones Achieved**

- Finalized funding agreement
- ULURP approval
- PDC conceptual and preliminary design approval

## **Program**

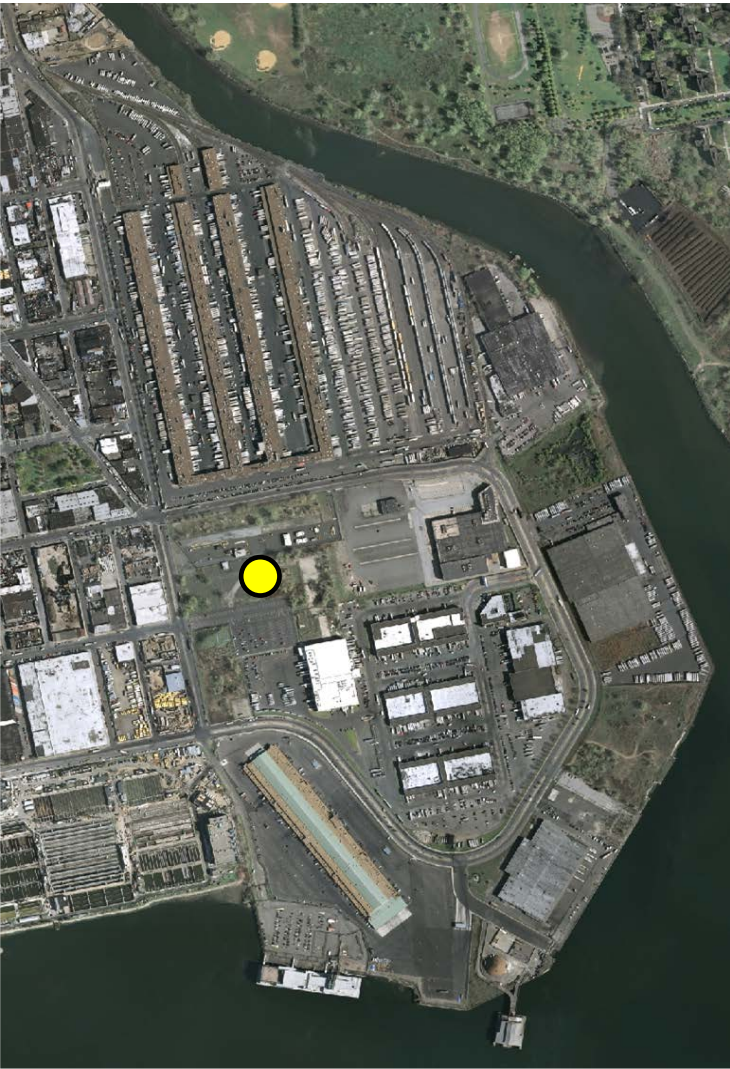
- Biodiesel, ethanol, CNG, with limited conventional fuels
- Truck maintenance facility for truck conversions
- Complementary uses include food retail, education center
- Targeted local hiring plan and workforce development goals
- Dedicated funding for alt fuels marketing campaign

## **Schedule**

- *Lease Closing and PDC Final Design Approval*  
Winter 2013
- *Remediation & Construction*  
Spring 2014 – Spring 2015

● Site of Proposed Facility - Corner of Halleck Street and Food Center Drive

# Halleck Industrial Development Site



## Project Update

- RFP reissued May 2013
- Proposals received September 2013

## Site Background

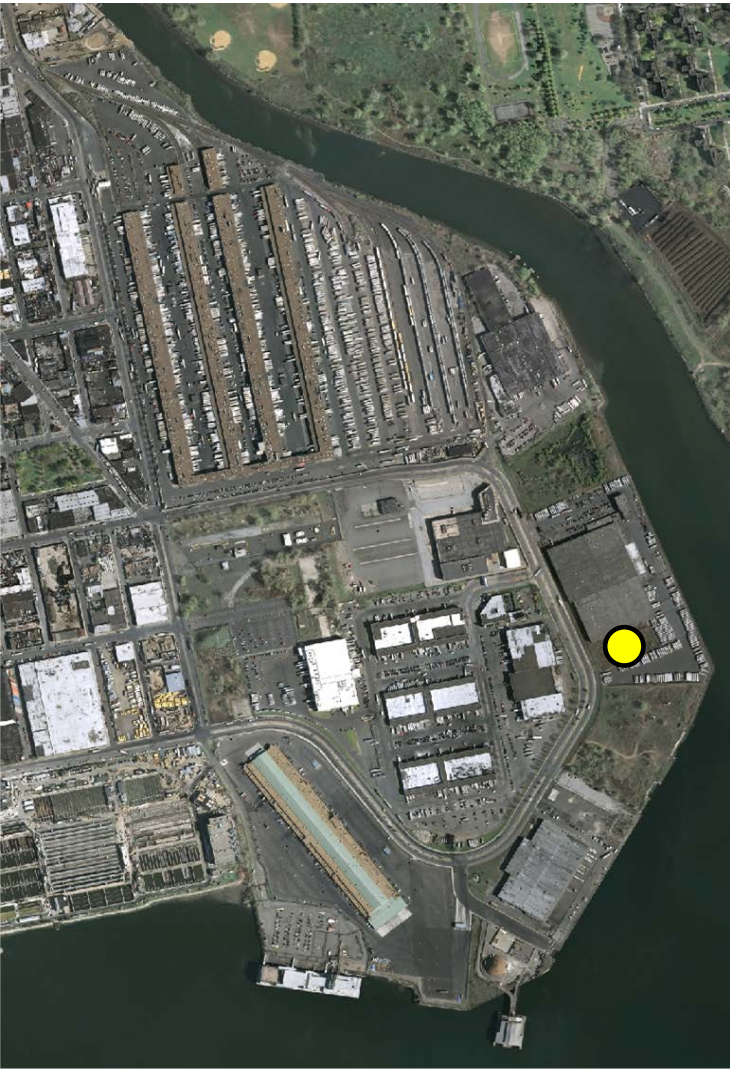
- 425,000 SF (9+ acres)
- Vacant and shovel-ready site
- Access to both Halleck Street and Food Center Drive
- Proposals for food-related uses do not require ULURP approval process

## RFP Background

- Priority for food-related uses; also open to industrial and ancillary retail uses
- Respondents encouraged to minimize additional traffic impacts
- Respondents required to propose how they would maximize job creation and local hiring

● Site of Proposed Facility

# Site F



● Site F

## Project Update

- Pilot Study planned to evaluate application of stabilization technology.
- Pilot will be done behind a fence and protective underground barrier.
- Process includes mixing existing soil with cement grout and testing the mixture when set.
- Once pilot is completed, all technologies will be evaluated in a Feasibility Study.

## Site Background

- November 2013: Geotechnical drilling
- December 2013: Pilot testing
- January 2014: On-site testing complete
- January 2015: Feasibility Study complete

## Background

- Site F contains waste from former Manufactured Gas Plant technology, which belonged to a Con Edison predecessor
- Con Edison will reimburse the City for remediation and pilot testing
- All work is approved by the NYSDEC and NYSDOH

# NYCDOT Hunts Point Clean Trucks Program



## HUNTS POINT CLEAN TRUCKS PROGRAM

### Eligibility

Truck owners and operators meeting the following guidelines may be eligible to participate in the CTP.

- ❖ History of Moving Goods in Hunts Point and/or Port Morris
- ❖ Truck(s) are Class 3 to Class 8
- ❖ Truck(s) with a Engine Model Year 2003 and Older

For more information, visit [www.huntspointctp.com](http://www.huntspointctp.com)

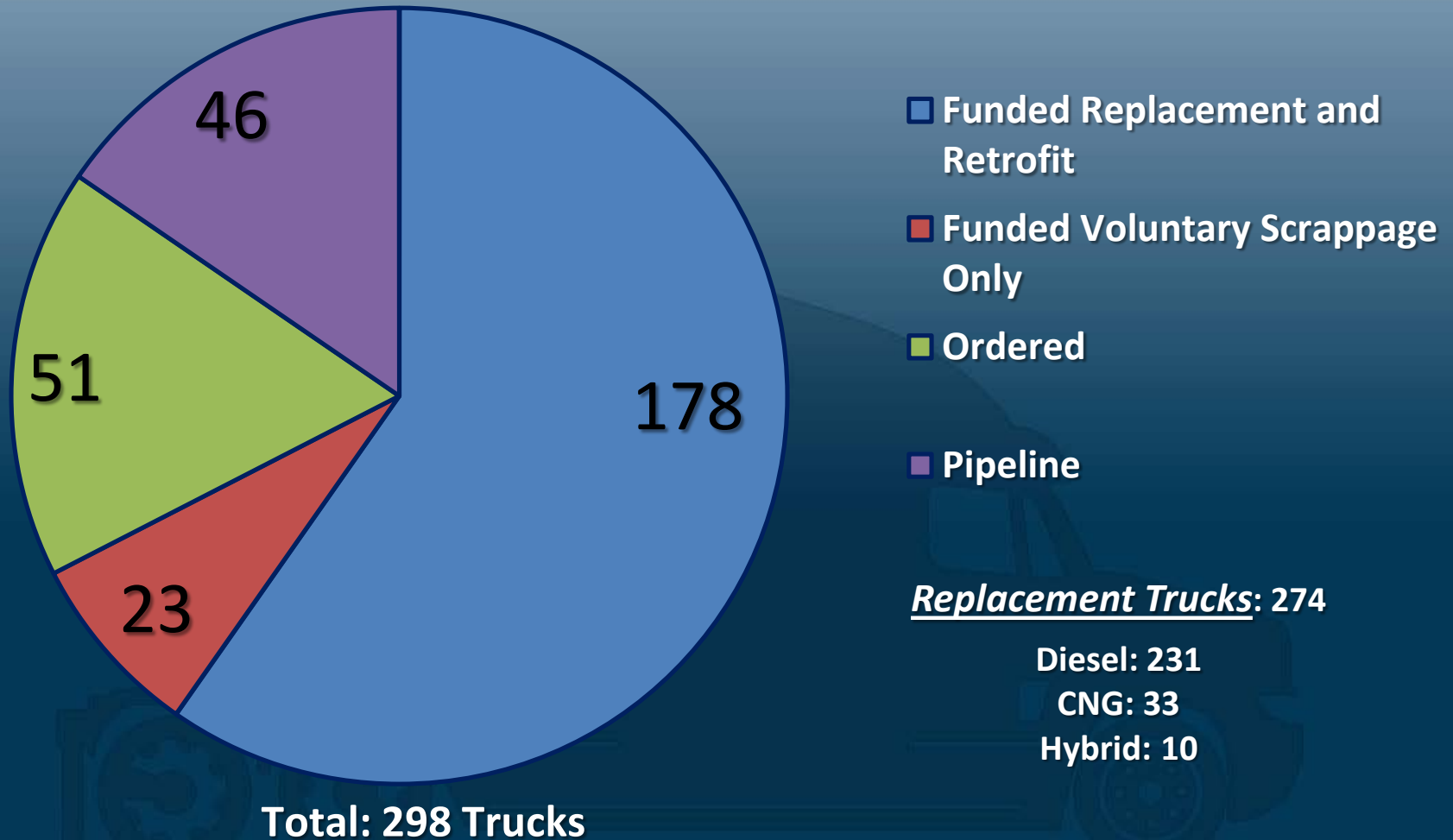
# Program Progress

## Program Progress



# Program Progress

## **Total Number of Trucks as of November 2013** Replacement and Retrofit, Scrappage Only, Ordered, Pipeline



# Emissions Results Summary

As of November 2013



Annual	No <sub>x</sub> (short tons/year)	PM <sub>2.5</sub> (short tons/year)	HC (short tons/year)	CO (short tons/year)	CO <sub>2</sub> (short tons/year)	Diesel-Equivalent (gallons/year)
Percent Reduced* (%)	86.8%	96.2%	84.7%	78.4%	10.9%	10.9%
Amount Reduced/Year	124.5	6.9	8.8	42.5	1,761.9	158,729.7





# Rebate Amounts

Vehicle Class (GVWR)	Scrap Only	2010-Compliant Diesel Rebate Amount for Engine 2003 or Older	2010-Compliant Diesel Rebate Amount for Engine 2004 to 2006	Diesel-Electric Hybrid Truck Rebate Amount	Compressed Natural Gas Truck Rebate Amount	Battery Electric Truck Rebate Amount
Class 3 (10,001 – 14,000 lbs.)	\$2,500	\$12,000	\$15,000	N/A	\$25,000	\$60,000
Class 4 (14,001 – 16,000 lbs.)	\$3,000	\$13,000	\$17,000			
Class 5 (16,001 – 19,500 lbs.)	\$3,500	\$15,000	\$19,000	\$40,000	\$40,000	\$65,000
Class 6 (19,501 – 26,000 lbs.)	\$4,000	\$20,000	\$24,000			
Class 7 (26,001 – 33,000 lbs.)	\$4,500	\$21,000	\$26,000	\$48,000	\$48,000	\$70,000
Class 8 (33,001 lbs. or greater)	\$5,000	\$34,000	\$43,000			N/A

# Discussion

---

